

A nighttime aerial view of San Antonio, Texas, showing a dense urban landscape with numerous illuminated skyscrapers and buildings. The sky is a deep blue, and the city lights create a vibrant glow. Notable buildings include the BBVA Compass tower on the left and the Hyatt Regency on the right. The text "W. Apron Taxilane" is overlaid in the center in a large, white, sans-serif font.

W. Apron Taxilane

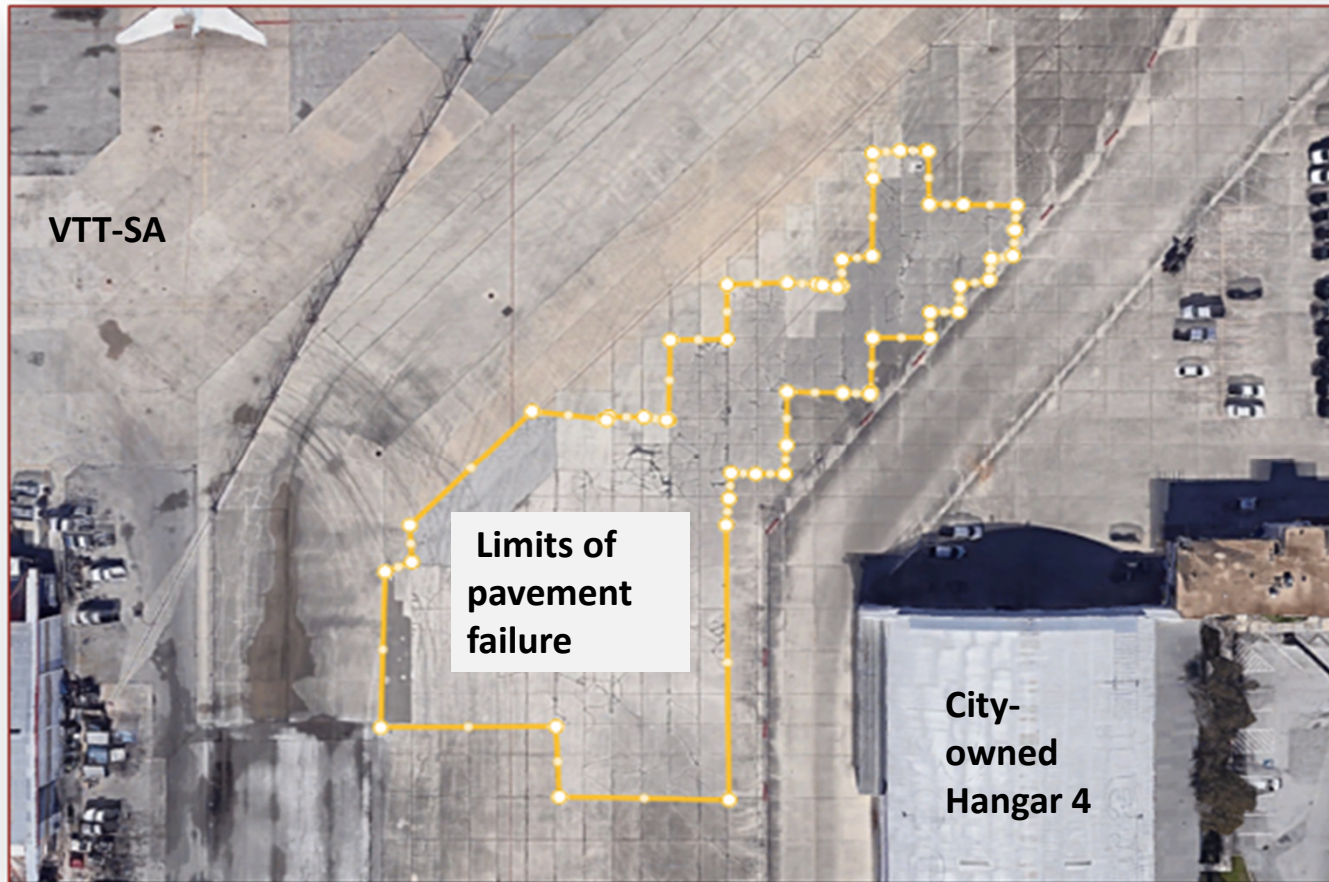
Item 16
Jesus H. Saenz, Jr., IAP
September 29, 2022



SAN ANTONIO
INTERNATIONAL AIRPORT



Background



W. Apron Taxilane Reconstruction:

Reconstruction of approximately 31,500 square feet of 60-year-old Portland Cement Concrete (PCC) pavement



Background

Solicitation

Invitation To Bid

- Released June 27, 2022
- 3 Bids opened on July 29, 2022
- Spawglass Civil Construction submitted lowest, responsive bid

Contract Value **\$2,737,007**

- FAA Airport Infrastructure Grant: \$2,052,755.25
- Airport Interim Financing: \$684,251.75

A nighttime aerial view of San Antonio, Texas, showing a dense urban landscape with numerous illuminated skyscrapers and buildings. The sky is a deep blue, and the city lights create a vibrant glow. Notable buildings include the BBVA Compass tower on the left and the Hyatt Regency on the right. The text "W. Apron Taxilane" is overlaid in the center in a large, white, sans-serif font.

W. Apron Taxilane

Item 16
Jesus H. Saenz, Jr., IAP
September 29, 2022



SAN ANTONIO
INTERNATIONAL AIRPORT